

### ACLS Rhythms Pretest Question Answers

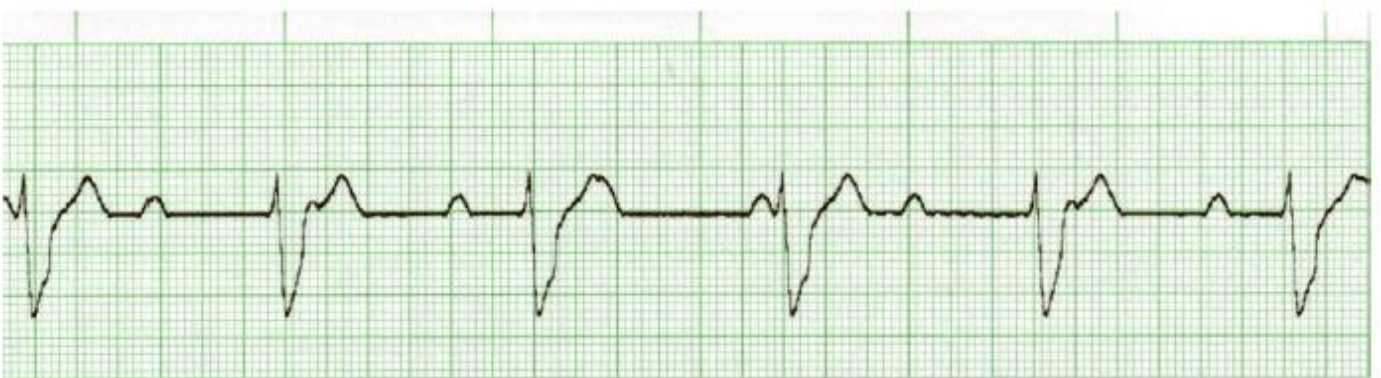
Q1.



<input type="radio"/> A. 3rd degree block	<input type="radio"/> D. 2nd degree I Block
<input type="radio"/> B. 2nd degree II Block	<input type="radio"/> E. Sinus Tachycardia
<input type="radio"/> C. Asystole	<input type="radio"/> F. Asystole

Answer

Q2.



<input type="radio"/> A. 3rd degree block	<input type="radio"/> D. 2nd degree I Block
<input type="radio"/> B. 2nd degree II Block	<input type="radio"/> E. Fine Ventricular Fibrillation
<input type="radio"/> C. Sinus Tachycardia	<input type="radio"/> F. Atrial Flutter

Answer

Q3.



<input type="radio"/> A. 3rd degree block	<input type="radio"/> D. Polymorphic VTach (Torsades)
<input type="radio"/> B. 2nd degree II Block	<input type="radio"/> E. Supraventricular Tachycardia SVT
<input type="radio"/> C. 2nd degree Type I Block	<input type="radio"/> F. Atrial Fibrillation

Answer

Q4.



<input type="radio"/> A. Atrial Flutter	<input type="radio"/> D. Atrial Fibrillation
<input type="radio"/> B. Coarse VFib	<input type="radio"/> E. Supraventricular Tachycardia SVT
<input type="radio"/> C. Monomorphic VTach	<input type="radio"/> F. Sinus Brady

Answer

Q5.



<input type="radio"/> A. Atrial Flutter	<input type="radio"/> D. 2nd degree Type II Block
<input type="radio"/> B. Fine Ventricular Fibrillation	<input type="radio"/> E. Fine VFib
<input type="radio"/> C. Polymorphic VTach	<input type="radio"/> F. Sinus Brady

Answer

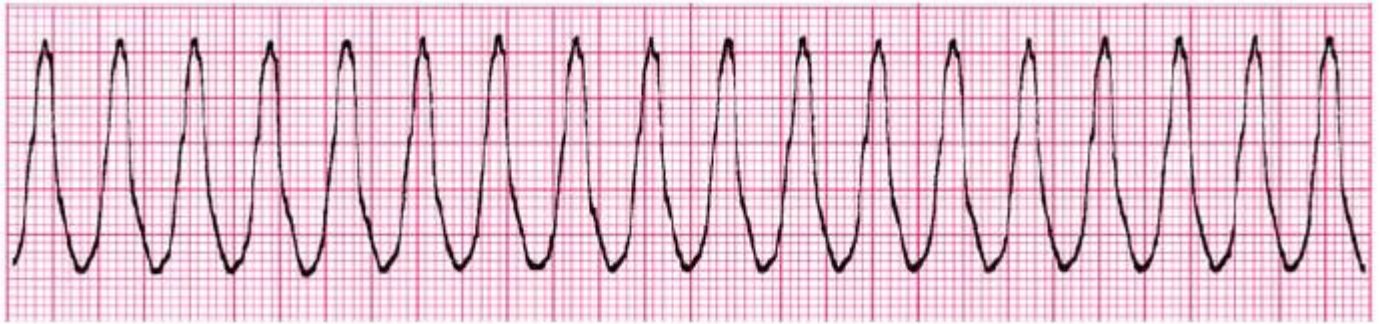
Q6.



<input type="radio"/> A. Atrial Flutter	<input type="radio"/> D. Atrial Fibrillation
<input type="radio"/> B. Fine VFib	<input type="radio"/> E. Coarse VFib
<input type="radio"/> C. Polymorphic VTach	<input type="radio"/> F. Monomorphic VTach

Answer

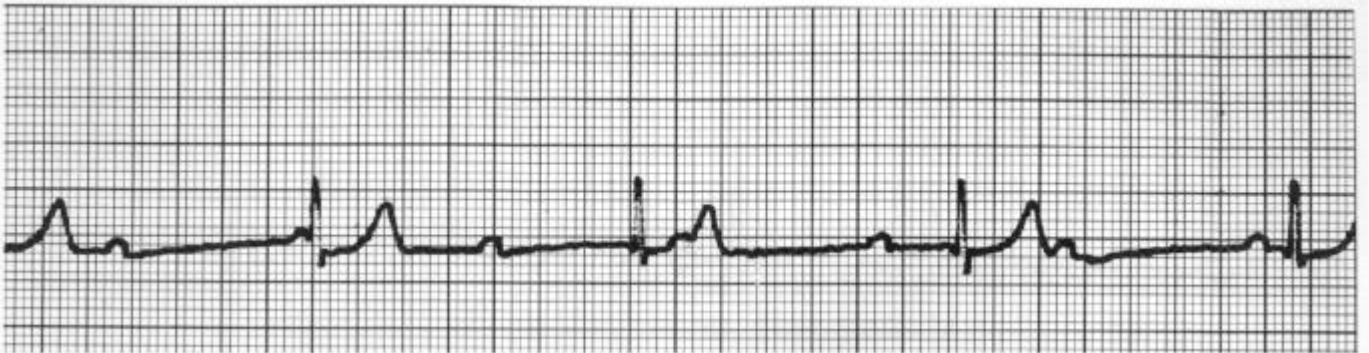
Q7.



<input type="radio"/> A. Normal Sinus Rhythm NSR	<input type="radio"/> D. Coarse Ventricular Fibrillation
<input type="radio"/> B. Sinus Tachycardia	<input type="radio"/> E. Asystole
<input type="radio"/> C. 2nd degree I Block	<input type="radio"/> F. Monomorphic VTach

Answer

Q8.



<input type="radio"/> A. 2nd degree I Block	<input type="radio"/> D. 3rd degree block
<input type="radio"/> B. 2nd degree II Block	<input type="radio"/> E. Sinus Tachycardia
<input type="radio"/> C. Fine Ventricular Fibrillation	<input type="radio"/> F. Atrial Flutter

Answer

Q9.



<input type="radio"/> A. 3rd degree block	<input type="radio"/> D. Atrial Fibrillation
<input type="radio"/> B. Asystole	<input type="radio"/> E. Atrial Flutter
<input type="radio"/> C. 2nd degree Type I Block	<input type="radio"/> F. Sinus Brady

Answer

Q10.



<input type="radio"/> A. NSR	<input type="radio"/> D. 2nd degree Type I Block
<input type="radio"/> B. SVT	<input type="radio"/> E. Fine VFib
<input type="radio"/> C. Sinus Brady	<input type="radio"/> F. Monomorphic VTach

Answer

## Answer Key Link:

[ACLS Rhythms Practice Test: Recognition Rhythm Strips \[PDF\]](#)